

**STANDARD ARRIVAL
CHART -
INSTRUMENT
(STAR)**

TRANSITIONAL ALTITUDE
7000'
TRANSITIONAL LEVEL
ATC

KIMBERLEY TWR: 118.20
APN: 122.65
APP: 119.40
BLOEMFONTEIN APP: 124.30

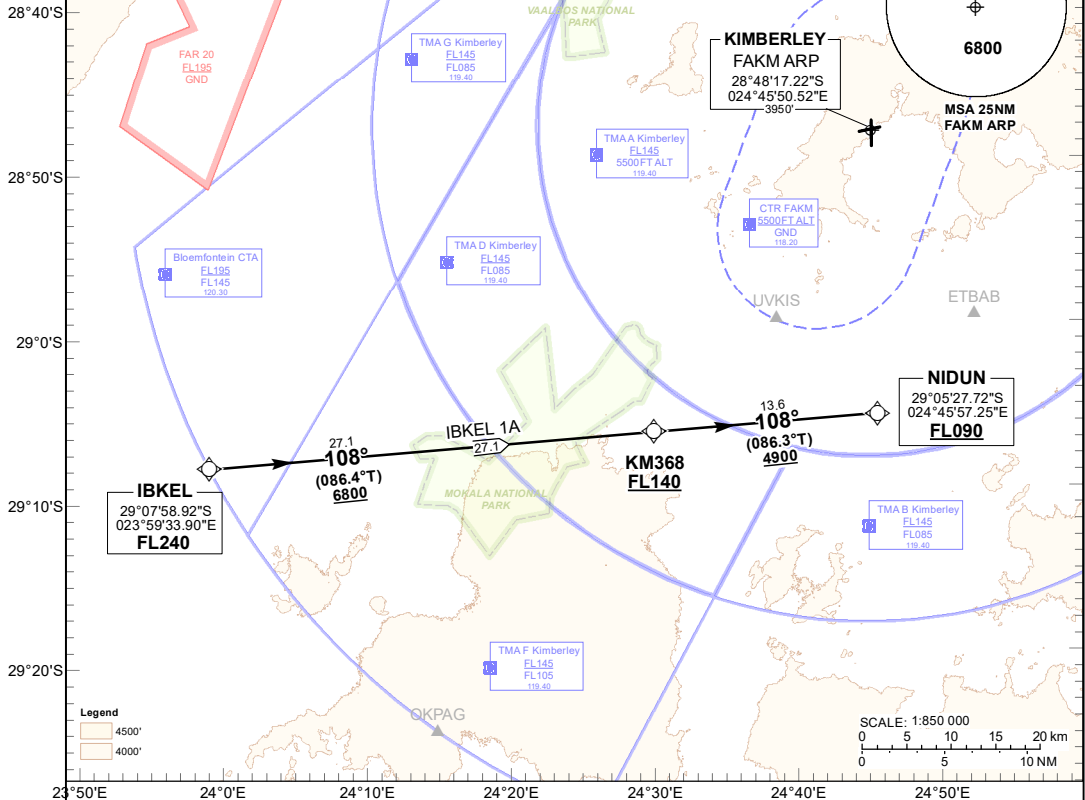
**KIMBERLEY
RNAV (GNSS) RWY 02
IBKEL 1A**



ELEV, ALT & HGT IN FEET
DIST IN NM
BRG ARE MAG
VAR 22°W (2020)

NOTE
1. If unable to comply with SID or STAR, notify ATC.
2. Cross the CTR boundary at or above 5500' ALT.
3. SIDs and STARs only in force when surveillance RADAR is in operation.

RNAV 1 REQUIRED



**IBKEL 1A:
RWY 02** Leave IBKEL for KM368. Cross KM368 at or above FL140. At KM368 route to NIDUN at or above FL090. At NIDUN continue on the RNAV (GNSS) APCH RWY 02.

COMMUNICATION FAILURE PROCEDURE (Squawk 7600)
Before IBKEL: Proceed to IBKEL and continue on the "After IBKEL" Communication Failure Procedure.
After IBKEL: Continue on the IBKEL 1A RNAV (GNSS) RWY 02 STAR to NIDUN. At NIDUN route to UVKIS. At UVKIS comply with the RNAV (GNSS) RWY 02 Communication Failure Procedure.

CHANGE: NEW Procedure